



## R32 Daikin Altherma 3 powered by Bluevolution

### Why choose Daikin Altherma 3?

Bluevolution technology combines very high efficient compressors developed by Daikin with the future of refrigerants: R32\*.



#### High performance

- › Delivering temperatures up to 65°C at high efficiency, the R32 Daikin Altherma 3 is suitable for both underfloor heating and radiators and retains its pedigree trademark in frost protection down to -25°C, ensuring reliable operation even in the coldest climates.
- › The optimal combination of Bluevolution technology offers the highest performance:
  - » seasonal efficiency up to A+++
  - » heating efficiency up to a COP of 5,1 (at 7°C/35°C)
  - » Domestic hot water efficiency up to COP of 3,3 (EN16147)
- › Available in 4, 6 and 8 kW

#### Easy to install

- › Delivered ready to work: all key hydraulic elements are already factory mounted
- › The new design enables that all servicing can be done from the front and all piping can be accessed at the top of the unit
- › Stylish modern outlook
- › The outdoor unit is tested and charged with refrigerant, installation time is reduced

#### Easy commissioning :

- › Integrated high resolution colour interface
- › Quick wizard allowing commissioning in maximum 9 easy steps to have the full system ready to work
- › Next to that the configuration can take place remotely to upload later on the unit the day of the installation.

#### Easy to control

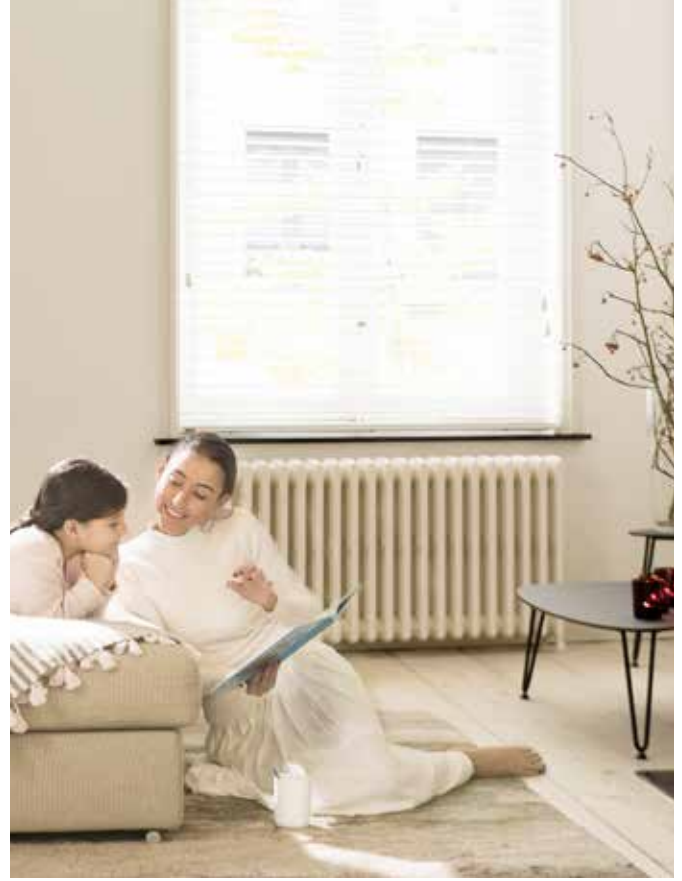
- › The combined effect of the Daikin Altherma weather dependent set-point controls and its inverter compressors maximises the efficiency of the new R32 Daikin Altherma 3 at each outdoor temperature, assuring consistent room temperatures at all times.
- › To control on a daily basis your home temperature, settings can be done anywhere at any time via the Daikin Online Controller app. This online controller allows adjustment of home comfort levels to suit individual preferences while achieving further energy efficiencies. The R32 Daikin Altherma 3 range can also be fully integrated with other home control systems.



Control via app

## R32 Daikin Altherma 3 offers a wide range to adapt to your customers needs

- **Best seasonal efficiencies** providing the highest savings on running costs
- Perfect fit for **new builds**, as well as for low energy houses
- A leaving water temperature up to 65°C makes it also **a perfect choice for refurbishments**



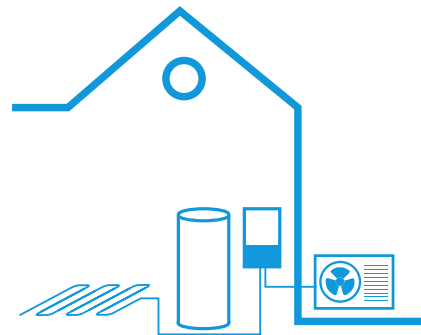
To cover all applications, the R32 Daikin Altherma 3 is available in 2 different indoor units :



### Floor standing unit with integrated domestic hot water tank

#### Compact and yet 100 % comfort guaranteed

- › All components and connections are factory mounted
- › Very small 600 x 600 installation footprint required
- › Minimum electrical input with constantly available hot water
- › Dedicated bi-zone models available: two temperature zones automatically regulated by the same indoor unit
- › Modern stylish design available in white or silvergrey



### Wall mounted unit

#### High flexibility for installation and domestic hot water connection

- › Compact unit with small installation (almost no side clearance is required)
- › Can be combined with a space separate domestic hot water tank up to 500 litres, with or without solar support
- › Stylish modern design

## Floor standing unit with integrated domestic hot water tank

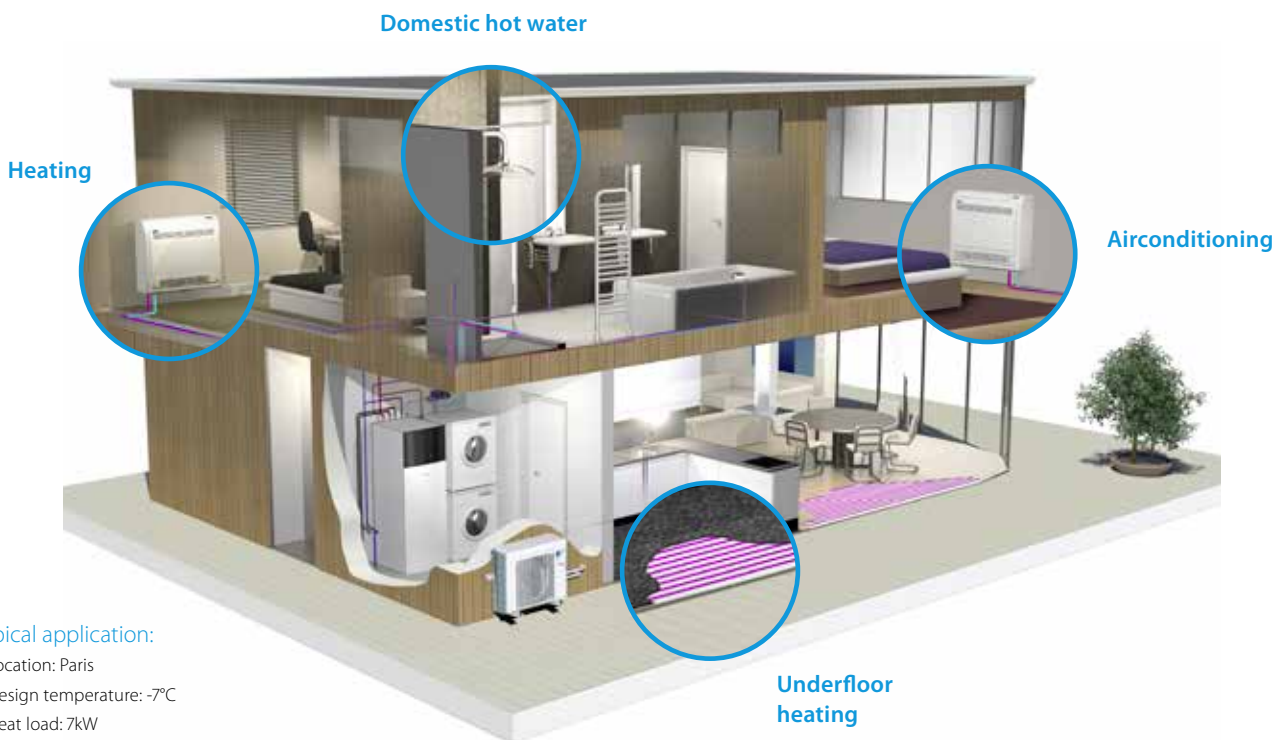


### Why choose Daikin floor standing unit with integrated domestic hot water tank?

The Daikin Altherma 3 floor standing unit is the ideal system **to deliver heating, domestic hot water and cooling** for new build and low energy houses.

#### All in one system to save installation space and time

- › A combined stainless steel domestic hot water tank of 180 or 230 L and heatpump ensures a faster installation compared to traditional systems.
- › Inclusion of all hydraulic components means no third party components are required.
- › PCB board and hydraulic components are located in the front for easy access
- › Small installation footprint of 600 x 600 mm
- › Integrated back-up heater choice of 3, 6, 9 kW as well as back-up heater less models are available
- › Dedicated bi-zone models allowing temperature monitoring for 2 zones connect underfloor heating to radiators for optimise efficiency



#### Typical application:

- › Location: Paris
- › Design temperature: -7°C
- › Heat load: 7kW
- › Heating off temperature: 16°C

# All-in one design

## Reduces the installation footprint and height

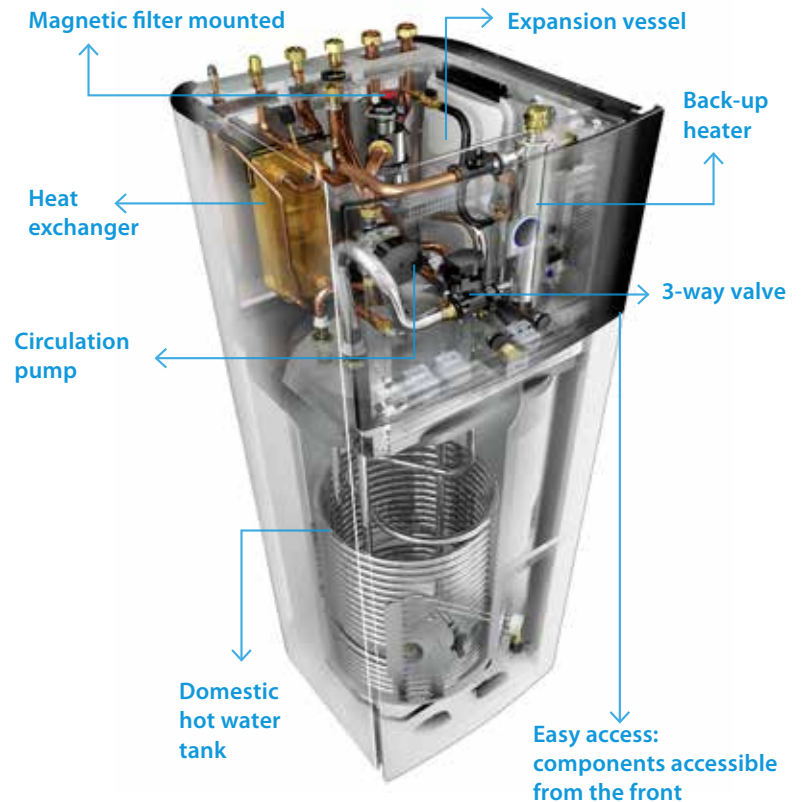
Compared to the traditional split version for a wall mounted indoor unit and a separate domestic hot water tank, the integrated indoor unit greatly reduces the installation space required.

With a small footprint of 600 x 600 mm, the integrated indoor unit has a similar footprint when compared to other household appliances.

For installation projects, almost no side clearance is necessary as the piping is located at the top of the unit.

With an installation height of 1,65 m for an 180 L tank and 1,85 m for a 230 L tank, the required installation height is less than 2m.

The compactness of the integrated indoor unit is emphasised by its sleek design and modern look, easy blending in with other household appliances.



## Advanced MMI



### Have an overview of the temperature

- › Inside your home with differences regarding the room: from the water temperature to your underfloor heating system
- › Outside your home

### Personalise

- › The language and your date
- › The number of zones that needs to be heated and the required temperatures

### Set

- › the parameters of your domestic hot water
- › and your heating system

### Configure

- › the whole system easily thanks to the Quick Wizard

### The Daikin-Eye

- › That shows the status of the unit. Blue means that the unit is working well, red means that an error is occurring

## Integrated indoor unit



# Daikin Altherma 3 low temperature split integrated floor standing unit

Floor standing air to water heat pump for heating and hot water; ideal for low energy houses

- › A combined stainless steel domestic hot water tank of 180 or 230L and heat pump for easy installation
- › Inclusion of all hydraulic components means no third party components are required
- › PCB board and hydraulic components are located in the front for easy access
- › Small installation footprint of 600x600mm
- › Integrated back-up heater choice of 6 or 9 kW
- › Outdoor unit extracts heat from the outdoor air, even at -25°C



A+++ 65°C R-32

| Efficiency data            |                                   | EHVH + ERGA                           |  | 04S18D6V(G)+04DV     | 04S23D6V(G)+04DV                     | 08S18D6V(G)/D9W(G)+06DV | 08S23D6V(G)/D9W(G)+06DV | 08S18D6V(G)/D9W(G)+08DV | 08S23D6V(G)/D9W(G)+08DV |
|----------------------------|-----------------------------------|---------------------------------------|--|----------------------|--------------------------------------|-------------------------|-------------------------|-------------------------|-------------------------|
| Heating capacity           | Nom.                              | kW                                    |  | 4.30 (1) / 4.20 (2)  |                                      | 6.00 (1) / 5.90 (2)     |                         | 7.50 (1) / 7.50 (2)     |                         |
| Power input                | Heating                           | kW                                    |  | 0.850 (1) / 1.16 (2) |                                      | 1.24 (1) / 1.69 (2)     |                         | 1.63 (1) / 2.14 (2)     |                         |
| COP                        |                                   |                                       |  | 5.10 (1) / 3.62 (2)  |                                      | 4.85 (1) / 3.50 (2)     |                         | 4.60 (1) / 3.50 (2)     |                         |
| Space heating              | Average climate water outlet 55°C | General                               | SCOP                                   |                      |                                      | 3.26                    |                         | 3.32                    |                         |
|                            |                                   |                                       | ηs (Seasonal space heating efficiency) |                      |                                      | 127                     |                         | 130                     |                         |
|                            | Average climate water outlet 35°C | General                               | SCOP                                   | 4.48                 |                                      | 4.47                    |                         | 4.56                    |                         |
|                            |                                   |                                       | ηs (Seasonal space heating efficiency) |                      |                                      | 176                     |                         | 179                     |                         |
|                            |                                   |                                       |  |                      | A++                                  |                         |                         |                         |                         |
| Domestic hot water heating | General                           | Declared load profile                 |  | L                    | XL                                   | L                       | XL                      | L                       | XL                      |
|                            | Average climate                   | ηwh (water heating efficiency)        |  | 127                  | 134                                  | 127                     | 134                     | 127                     | 134                     |
|                            |                                   | Water heating energy efficiency class |  |                      |                                      | A+++ (3)                |                         | A+                      |                         |
| Indoor Unit                |                                   | EHVH                                  |  | 04S18D6V(G)          | 04S23D6V(G)                          | 08S18D6V(G)/D9W(G)      | 08S23D6V(G)/D9W(G)      | 08S18D6V(G)/D9W(G)      | 08S23D6V(G)/D9W(G)      |
| Casing                     | Colour                            |                                       |  | White + Black        |                                      |                         |                         |                         |                         |
|                            | Material                          |                                       |  | Resin / Sheet metal  |                                      |                         |                         |                         |                         |
| Dimensions                 | Unit                              | HeightxWidthxDepth                    |  | mm                   | 1,650x595x625                        | 1,850x595x625           | 1,650x595x625           | 1,850x595x625           | 1,650x595x625           |
| Weight                     | Unit                              |                                       |  | kg                   | 131                                  | 139                     | 131                     | 139                     | 131                     |
| Tank                       | Water volume                      |                                       |  | l                    | 180                                  | 230                     | 180                     | 230                     | 180                     |
|                            | Maximum water temperature         |                                       |  | °C                   | 60                                   |                         |                         |                         |                         |
|                            | Maximum water pressure            |                                       |  | bar                  | 10                                   |                         |                         |                         |                         |
|                            | Corrosion protection              |                                       |  |                      | Pickling                             |                         |                         |                         |                         |
| Operation range            | Heating                           | Ambient                               | Min.~Max.                              | °C                   | 5~30                                 |                         |                         |                         |                         |
|                            |                                   | Water side                            | Min.~Max.                              | °C                   | 15~65                                |                         |                         |                         |                         |
|                            | Domestic hot water                | Ambient                               | Min.~Max.                              | °CDB                 | 5~35                                 |                         |                         |                         |                         |
|                            |                                   | Water side                            | Max.                                   | °C                   | 60                                   |                         |                         |                         |                         |
| Sound power level          | Nom.                              |                                       |  | dBA                  | 42                                   |                         |                         |                         |                         |
| Sound pressure level       | Nom.                              |                                       |  | dBA                  | 28                                   |                         |                         |                         |                         |
| Outdoor Unit               |                                   | ERGA                                  |  | 04DV                 | 06DV                                 |                         | 08DV                    |                         |                         |
| Dimensions                 | Unit                              | HeightxWidthxDepth                    |  | mm                   | 740x884x388                          |                         |                         |                         |                         |
| Weight                     | Unit                              |                                       |  | kg                   | 58.5                                 |                         |                         |                         |                         |
| Compressor                 | Quantity                          |                                       |  |                      | 1                                    |                         |                         |                         |                         |
|                            | Type                              |                                       |  |                      | Hermetically sealed swing compressor |                         |                         |                         |                         |
| Operation range            | Cooling                           | Min.~Max.                             |  | °CDB                 | 10~43                                |                         |                         |                         |                         |
|                            | Domestic hot water                | Min.~Max.                             |  | °CDB                 | -25~35                               |                         |                         |                         |                         |
| Refrigerant                | Type                              |                                       |  |                      | R-32                                 |                         |                         |                         |                         |
|                            | GWP                               |                                       |  |                      | 675.0                                |                         |                         |                         |                         |
|                            | Charge                            |                                       |  | kg                   | 1.50                                 |                         |                         |                         |                         |
|                            | Control                           |                                       |  |                      | Expansion valve                      |                         |                         |                         |                         |
| Sound power level          | Heating                           | Nom.                                  |  | dBA                  | 58                                   | 60                      |                         | 62                      |                         |
|                            | Cooling                           | Nom.                                  |  | dBA                  | 61                                   | 62                      |                         | 62                      |                         |
| Sound pressure level       | Heating                           | Nom.                                  |  | dBA                  | 44                                   | 47                      |                         | 49                      |                         |
|                            | Cooling                           | Nom.                                  |  | dBA                  | 48                                   | 49                      |                         | 50                      |                         |
| Power supply               | Name/Phase/Frequency/Voltage      |                                       |  | Hz/V                 | V3/1N~/50/230                        |                         |                         |                         |                         |
| Current                    | Recommended fuses                 |                                       |  | A                    | 25                                   |                         |                         |                         |                         |

(1) Cooling Ta 35°C - LWE 18°C (DT = 5°C); heating Ta DB/WB 7°C/6°C - LWC 35°C (DT = 5°C) (2) Cooling Ta 35°C - LWE 7°C (DT = 5°C); heating Ta DB/WB 7°C/6°C - LWC 45°C (DT = 5°C) (3) According to EU n°811/2013 - label lay-out 2019

# Daikin Altherma 3 low temperature split integrated floor standing unit

Floor standing air to water heat pump for heating, cooling and hot water; ideal for low energy houses

- > A combined stainless steel domestic hot water tank of 180 or 230L and heat pump for easy installation
- > Inclusion of all hydraulic components means no third party components are required
- > PCB board and hydraulic components are located in the front for easy access
- > Small installation footprint of 600x600mm
- > Integrated back-up heater choice of 3, 6, 9 kW
- > Outdoor unit extracts heat from the outdoor air, even at -25°C



A+++ 65°C R-32

| Efficiency data            |                                   |         |  | EHVX + ERGA | 04S18D3V(G)/D6V(G) + 04DV | 04S23D3V(G)/D6V(G) + 04DV | 08S18D6V(G)/D9W(G) + 06DV | 08S23D6V(G)/D9W(G) + 06DV | 08S18D6V(G)/D9W(G) + 08DV | 08S23D6V(G)/D9W(G) + 08DV |
|----------------------------|-----------------------------------|---------|--|-------------|---------------------------|---------------------------|---------------------------|---------------------------|---------------------------|---------------------------|
| Heating capacity           | Nom.                              |         |  |             | 4.30 (1) / 4.20 (2)       |                           | 6.00 (1) / 5.90 (2)       |                           | 7.50 (1) / 7.50 (2)       |                           |
| Power input                | Heating                           | Nom.    |  |             | 0,850 (1) / 1.16 (2)      |                           | 1.24 (1) / 1.69 (2)       |                           | 1.63 (1) / 2.14 (2)       |                           |
| Cooling capacity           | Nom.                              |         |  |             | 5.56 (1) / 4.37 (2)       |                           | 5.96 (1) / 4.87 (2)       |                           | 6.25 (1) / 5.35 (2)       |                           |
| Power input                | Cooling                           | Nom.    |  |             | 0,940 (1) / 1.14 (2)      |                           | 1.06 (1) / 1.33 (2)       |                           | 1.16 (1) / 1.51 (2)       |                           |
| COP                        |                                   |         |  |             | 5.10 (1) / 3.62 (2)       |                           | 4.85 (1) / 3.50 (2)       |                           | 4.60 (1) / 3.50 (2)       |                           |
| EER                        |                                   |         |  |             | 5.94 (1) / 3.84 (2)       |                           | 5.61 (1) / 3.67 (2)       |                           | 5.40 (1) / 3.54 (2)       |                           |
| Space heating              | Average climate water outlet 55°C | General | SCOP                                   |             | 3.26                      |                           |                           |                           | 3.32                      |                           |
|                            |                                   |         | ηs (Seasonal space heating efficiency) | %           | 127                       |                           |                           |                           | 130                       |                           |
|                            | Average climate water outlet 35°C | General | SCOP                                   |             | 4.48                      |                           | 4.47                      |                           | 4.56                      |                           |
|                            |                                   |         | ηs (Seasonal space heating efficiency) | %           | 176                       |                           |                           |                           | 179                       |                           |
|                            |                                   |         | Seasonal space heating eff. class      |             | A++                       |                           |                           |                           | A+++ (3)                  |                           |
| Domestic hot water heating | Average climate                   | General | Declared load profile                  |             | L                         | XL                        | L                         | XL                        | L                         | XL                        |
|                            |                                   |         | ηwh (water heating efficiency)         | %           | 127                       | 134                       | 127                       | 134                       | 127                       | 134                       |
|                            |                                   |         | Water heating energy efficiency class  |             | A+                        |                           |                           |                           |                           |                           |

| Indoor Unit          |                           |                     |           | EHVX          | 04S18D3V(G)/D6V(G) | 04S23D3V(G)/D6V(G) | 08S18D6V(G)/D9W(G) | 08S23D6V(G)/D9W(G) | 08S18D6V(G)/D9W(G) | 08S23D6V(G)/D9W(G) |
|----------------------|---------------------------|---------------------|-----------|---------------|--------------------|--------------------|--------------------|--------------------|--------------------|--------------------|
| Casing               | Colour                    | White + Black       |           |               |                    |                    |                    |                    |                    |                    |
|                      | Material                  | Resin / Sheet metal |           |               |                    |                    |                    |                    |                    |                    |
| Dimensions           | Unit                      | HeightxWidthxDepth  | mm        | 1,650x595x625 | 1,850x595x625      | 1,650x595x625      | 1,850x595x625      | 1,650x595x625      | 1,850x595x625      |                    |
|                      | Weight                    | Unit                | kg        | 131           | 139                | 131                | 139                | 131                | 139                |                    |
| Tank                 | Water volume              | Unit                | l         | 180           | 230                | 180                | 230                | 180                | 230                |                    |
|                      | Maximum water temperature | Unit                | °C        | 60            |                    |                    |                    |                    |                    |                    |
|                      | Maximum water pressure    | Unit                | bar       | 10            |                    |                    |                    |                    |                    |                    |
|                      | Corrosion protection      | Pickling            |           |               |                    |                    |                    |                    |                    |                    |
| Operation range      | Heating                   | Ambient             | Min.-Max. | °C            |                    |                    |                    |                    |                    |                    |
|                      |                           | Water side          | Min.-Max. | °C            |                    |                    |                    |                    |                    |                    |
|                      | Cooling                   | Ambient             | Min.-Max. | °CDB          |                    |                    |                    |                    |                    |                    |
|                      |                           | Water side          | Min.-Max. | °C            |                    |                    |                    |                    |                    |                    |
|                      | Domestic hot water        | Ambient             | Min.-Max. | °CDB          |                    |                    |                    |                    |                    |                    |
|                      |                           | Water side          | Max.      | °C            |                    |                    |                    |                    |                    |                    |
| Sound power level    | Nom.                      | Unit                | dBA       | 42            |                    |                    |                    |                    |                    |                    |
| Sound pressure level | Nom.                      | Unit                | dBA       | 28            |                    |                    |                    |                    |                    |                    |

| Outdoor Unit         |                              |                                      |      | ERGA            | 04DV | 06DV | 08DV |
|----------------------|------------------------------|--------------------------------------|------|-----------------|------|------|------|
| Dimensions           | Unit                         | HeightxWidthxDepth                   | mm   | 740x884x388     |      |      |      |
|                      | Weight                       | Unit                                 | kg   | 58.5            |      |      |      |
| Compressor           | Quantity                     | 1                                    |      |                 |      |      |      |
|                      | Type                         | Hermetically sealed swing compressor |      |                 |      |      |      |
| Operation range      | Cooling                      | Min.-Max.                            | °CDB |                 |      |      |      |
|                      | Domestic hot water           | Min.-Max.                            | °CDB |                 |      |      |      |
| Refrigerant          | Type                         | R-32                                 |      |                 |      |      |      |
|                      | GWP                          | 675.0                                |      |                 |      |      |      |
|                      | Charge                       | Unit                                 | kg   | 1.50            |      |      |      |
| Sound power level    | Heating                      | Nom.                                 | dBA  | 58              | 60   | 62   |      |
|                      |                              | Control                              | Unit | Expansion valve |      |      |      |
|                      | Cooling                      | Nom.                                 | dBA  | 61              | 62   | 62   |      |
| Sound pressure level | Heating                      | Nom.                                 | dBA  | 44              | 47   | 49   |      |
|                      | Cooling                      | Nom.                                 | dBA  | 48              | 49   | 50   |      |
| Power supply         | Name/Phase/Frequency/Voltage | Unit                                 | Hz/V | V3/1N~/50/230   |      |      |      |
| Current              | Recommended fuses            | Unit                                 | A    | 25              |      |      |      |

(1) Cooling Ta 35°C - LWE 18°C (DT = 5°C); heating Ta DB/WB 7°C/6°C - LWC 35°C (DT = 5°C) (2) Cooling Ta 35°C - LWE 7°C (DT = 5°C); heating Ta DB/WB 7°C/6°C - LWC 45°C (DT = 5°C) (3) According to EU n°811/2013 label lay-out 2019

# Daikin Altherma 3 low temperature split integrated bi-zone

Floor standing integrated with **two different temperature zones monitoring**

- › A combined stainless steel domestic hot water tank of 180 or 230L and heat pump for easy installation
- › Inclusion of all hydraulic components means no third party components are required
- › PCB board and hydraulic components are located in the front for easy access
- › Small installation footprint of 600x600mm
- › Integrated back-up heater choice of 6 or 9 kW
- › Outdoor unit extracts heat from the outdoor air, even at -25°C



**A+++** **65°C** **R-32**

| Efficiency data            |                                   |                                       |  | EHVZ + ERGA         |  | 04S18D6V(G) + 04DV                   | 08S18D6V(G)/D9W(G) + 06DV | 08S23D6V(G)/D9W(G) + 06DV | 08S18D6V(G)/D9W(G) + 08DV | 08S23D6V(G)/D9W(G) + 08DV |  |
|----------------------------|-----------------------------------|---------------------------------------|--|---------------------|--|--------------------------------------|---------------------------|---------------------------|---------------------------|---------------------------|--|
| Heating capacity           | Nom.                              |                                       | kW                                     |                     |  | 4.30 (1) / 4.20 (2)                  | 6.00 (1) / 5.90 (2)       |                           | 7.50 (1) / 7.50 (2)       |                           |  |
| Power input                | Heating                           | Nom.                                  | kW                                     |                     |  | 0.850 (1) / 1.16 (2)                 | 1.24 (1) / 1.69 (2)       |                           | 1.63 (1) / 2.14 (2)       |                           |  |
| COP                        |                                   |                                       |  |                     |  | 5.10 (1) / 3.62 (2)                  | 4.85 (1) / 3.50 (2)       |                           | 4.60 (1) / 3.50 (2)       |                           |  |
| Space heating              | Average climate water outlet 55°C | General                               | SCOP                                   |                     |  | 3.26                                 |                           | 3.32                      |                           |                           |  |
|                            |                                   |                                       | ηs (Seasonal space heating efficiency) |                     |  | 127                                  |                           | 130                       |                           |                           |  |
|                            | Average climate water outlet 35°C | General                               | SCOP                                   | A++                 |  | 4.48                                 | 4.47                      |                           | 4.56                      |                           |  |
|                            |                                   |                                       | ηs (Seasonal space heating efficiency) |                     |  | 176                                  |                           | 179                       |                           |                           |  |
| Domestic hot water heating | General                           | Declared load profile                 |  |                     |  | L                                    | XL                        |                           | L                         | XL                        |  |
|                            | Average climate                   | ηwh (water heating efficiency)        | %                                      |                     |  | 127                                  | 134                       |                           | 127                       | 134                       |  |
|                            |                                   | Water heating energy efficiency class |  |                     |  | A+                                   |                           |                           |                           |                           |  |
| Indoor Unit                |                                   |                                       |  | EHVZ                |  | 04S18D6V(G)                          | 08S18D6V(G)/D9W(G)        | 08S23D6V(G)/D9W(G)        | 08S18D6V(G)/D9W(G)        | 08S23D6V(G)/D9W(G)        |  |
| Casing                     | Colour                            |                                       |  | White + Black       |  |                                      |                           |                           |                           |                           |  |
|                            | Material                          |                                       |  | Resin / Sheet metal |  |                                      |                           |                           |                           |                           |  |
| Dimensions                 | Unit                              | HeightxWidthxDepth                    | mm                                     | 1,650x595x625       |  | 1,850x595x625                        |                           | 1,650x595x625             |                           | 1,850x595x625             |  |
| Weight                     | Unit                              |                                       | kg                                     | 136                 |  | 144                                  |                           | 136                       |                           | 144                       |  |
| Tank                       | Water volume                      |                                       | l                                      | 180                 |  | 230                                  |                           | 180                       |                           | 230                       |  |
|                            | Maximum water temperature         |                                       | °C                                     |                     |  | 60                                   |                           |                           |                           |                           |  |
|                            | Maximum water pressure            |                                       | bar                                    |                     |  | 10                                   |                           |                           |                           |                           |  |
|                            | Corrosion protection              |                                       |  |                     |  | Pickling                             |                           |                           |                           |                           |  |
| Operation range            | Heating                           | Ambient                               | Min.~Max.                              | °C                  |  |                                      | 5~30                      |                           |                           |                           |  |
|                            |                                   | Water side                            | Min.~Max.                              | °C                  |  |                                      | 15~65                     |                           |                           |                           |  |
|                            | Domestic hot water                | Ambient                               | Min.~Max.                              | °CDB                |  |                                      | 5~35                      |                           |                           |                           |  |
|                            |                                   | Water side                            | Max.                                   | °C                  |  |                                      | 60                        |                           |                           |                           |  |
| Sound power level          | Nom.                              |                                       | dBA                                    |                     |  | 42                                   |                           |                           |                           |                           |  |
| Sound pressure level       | Nom.                              |                                       | dBA                                    |                     |  | 28                                   |                           |                           |                           |                           |  |
| Outdoor Unit               |                                   |                                       |  | ERGA                |  | 04DV                                 | 06DV                      |                           | 08DV                      |                           |  |
| Dimensions                 | Unit                              | HeightxWidthxDepth                    | mm                                     |                     |  | 740x884x388                          |                           |                           |                           |                           |  |
| Weight                     | Unit                              |                                       | kg                                     |                     |  | 58.5                                 |                           |                           |                           |                           |  |
| Compressor                 | Quantity                          |                                       |  |                     |  | 1                                    |                           |                           |                           |                           |  |
|                            | Type                              |                                       |  |                     |  | Hermetically sealed swing compressor |                           |                           |                           |                           |  |
| Operation range            | Cooling                           | Min.~Max.                             | °CDB                                   |                     |  | 10~43                                |                           |                           |                           |                           |  |
|                            | Domestic hot water                | Min.~Max.                             | °CDB                                   |                     |  | -25~35                               |                           |                           |                           |                           |  |
| Refrigerant                | Type                              |                                       |  |                     |  | R-32                                 |                           |                           |                           |                           |  |
|                            | GWP                               |                                       |  |                     |  | 675.0                                |                           |                           |                           |                           |  |
|                            | Charge                            |                                       | kg                                     |                     |  | 1.50                                 |                           |                           |                           |                           |  |
|                            | Control                           |                                       |  |                     |  | Expansion valve                      |                           |                           |                           |                           |  |
| Sound power level          | Heating                           | Nom.                                  | dBA                                    | 58                  |  |                                      | 60                        |                           |                           | 62                        |  |
|                            | Cooling                           | Nom.                                  | dBA                                    | 61                  |  |                                      | 62                        |                           |                           |                           |  |
| Sound pressure level       | Heating                           | Nom.                                  | dBA                                    | 44                  |  |                                      | 47                        |                           |                           | 49                        |  |
|                            | Cooling                           | Nom.                                  | dBA                                    | 48                  |  |                                      | 49                        |                           |                           | 50                        |  |
| Power supply               | Name/Phase/Frequency/Voltage      |                                       | Hz/V                                   |                     |  | V3/1N~/50/230                        |                           |                           |                           |                           |  |
| Current                    | Recommended fuses                 |                                       | A                                      |                     |  | 25                                   |                           |                           |                           |                           |  |

(1) Cooling Ta 35°C - LWE 18°C (DT = 5°C); heating Ta DB/WB 7°C/6°C - LWC 35°C (DT = 5°C) (2) Cooling Ta 35°C - LWE 7°C (DT = 5°C); heating Ta DB/WB 7°C/6°C - LWC 45°C (DT = 5°C) (3) According to EU n°811/2013 - label lay-out 2019

# Daikin Altherma 3 low temperature split integrated floor standing unit without backup heater

Floor standing air to water heat pump for heating and hot water; ideal for low energy houses

- › A combined stainless steel domestic hot water tank of 180 or 230L and heat pump for easy installation
- › Inclusion of all hydraulic components means no third party components are required
- › PCB board and hydraulic components are located in the front for easy access
- › Small installation footprint of 600x600mm
- › Outdoor unit extracts heat from the outdoor air, even at -25°C



| Efficiency data            |                                   |  |  | EHVH + ERGA          | 04S23DV(G) + 04DV                    | 08S23DV(G) + 06DV   | 08S23DV(G) + 08DV |
|----------------------------|-----------------------------------|--|--|----------------------|--------------------------------------|---------------------|-------------------|
| Heating capacity           | Nom.                              |  | kW   | 4.30 (1) / 4.20 (2)  | 6.00 (1) / 5.90 (2)                  | 7.50 (1) / 7.50 (2) |                   |
| Power input                | Heating                           | Nom.                                   | kW   | 0.850 (1) / 1.16 (2) | 1,24 (1) / 1,69 (2)                  | 1,63 (1) / 2.14 (2) |                   |
| COP                        |                                   |  |  | 5.10 (1) / 3.62 (2)  | 4,85 (1) / 3,50 (2)                  | 4,60 (1) / 3.50 (2) |                   |
| Space heating              | Average climate water outlet 55°C | General                                | SCOP   |                      | 3.26                                 |                     | 3.32              |
|                            |                                   |  | $\eta_s$ (Seasonal space heating efficiency) | %                    | 127                                  |                     | 130               |
|                            | Average climate water outlet 35°C | General                                | SCOP   |                      | 4.48                                 | A++                 | 4.56              |
|                            |                                   |  | $\eta_s$ (Seasonal space heating efficiency) | %                    | 176                                  | 4.47                | 179               |
|                            |                                   |  | Seasonal space heating eff. class            |                      | A+++ (3)                             |                     |                   |
| Domestic hot water heating | General                           | Declared load profile                  |  |                      | XL                                   |                     |                   |
|                            | Average climate                   | $\eta_{wh}$ (water heating efficiency) |  | %                    | 134                                  |                     |                   |
|                            |                                   | Water heating energy efficiency class  |  |                      | A+                                   |                     |                   |
| Indoor Unit                |                                   |  |  | EHVH                 | 04S23DV(G)                           | 08S23DV(G)          | 08S23DV(G)        |
| Casing                     | Colour                            | White + Black                          |  |                      |                                      |                     |                   |
|                            | Material                          | Resin / Sheet metal                    |  |                      |                                      |                     |                   |
| Dimensions                 | Unit                              | HeightxWidthxDpeth                     |  | mm                   | 1,850x595x625                        |                     |                   |
| Weight                     | Unit                              |  |  | kg                   | 139                                  |                     |                   |
| Tank                       | Water volume                      |  |  | l                    | 230                                  |                     |                   |
|                            | Maximum water temperature         |  |  | °C                   | 70                                   |                     |                   |
|                            | Maximum water pressure            |  |  | bar                  | 10                                   |                     |                   |
|                            | Corrosion protection              |  |  |                      | Pickling                             |                     |                   |
| Operation range            | Heating                           | Ambient                                | Min.~Max.                                    | °C                   | 5~30                                 |                     |                   |
|                            |                                   | Water side                             | Min.~Max.                                    | °C                   | 10 ~70                               |                     | 10 ~65            |
|                            | Domestic hot water                | Ambient                                | Min.~Max.                                    | °CDB                 | 5~35                                 |                     |                   |
|                            |                                   | Water side                             | Max.   | °C                   | 70                                   |                     |                   |
| Sound power level          | Nom.                              |  |  | dBA                  | 42                                   |                     |                   |
| Sound pressure level       | Nom.                              |  |  | dBA                  | 28                                   |                     |                   |
| Outdoor Unit               |                                   |  |  | ERGA                 | 04DV                                 | 06DV                | 08DV              |
| Dimensions                 | Unit                              | HeightxWidthxDpeth                     |  | mm                   | 740x884x388                          |                     |                   |
| Weight                     | Unit                              |  |  | kg                   | 58.5                                 |                     |                   |
| Compressor                 | Quantity                          |  |  |                      | 1                                    |                     |                   |
|                            | Type                              |  |  |                      | Hermetically sealed swing compressor |                     |                   |
| Operation range            | Cooling                           | Min.~Max.                              |  | °CDB                 | 10~43                                |                     |                   |
|                            | Domestic hot water                | Min.~Max.                              |  | °CDB                 | -25~35                               |                     |                   |
| Refrigerant                | Type                              |  |  |                      | R-32                                 |                     |                   |
|                            | GWP                               |  |  |                      | 675.0                                |                     |                   |
|                            | Charge                            |  |  | kg                   | 1.50                                 |                     |                   |
|                            | Control                           |  |  |                      | Expansion valve                      |                     |                   |
| Sound power level          | Heating                           | Nom.                                   |  | dBA                  | 58                                   | 60                  | 62                |
|                            | Cooling                           | Nom.                                   |  | dBA                  | 61                                   |                     | 62                |
| Sound pressure level       | Heating                           | Nom.                                   |  | dBA                  | 44                                   | 47                  | 49                |
|                            | Cooling                           | Nom.                                   |  | dBA                  | 48                                   | 49                  | 50                |
| Power supply               | Name/Phase/Frequency/Voltage      |  |  | Hz/V                 | V3/1N~/50/230                        |                     |                   |
| Current                    | Recommended fuses                 |  |  | A                    | 25                                   |                     |                   |

(1)Condition 1: cooling Ta 35°C - LWE 18°C (DT = 5°C); heating Ta DB/WB 7°C/6°C - LWC 35°C (DT = 5°C) | (2)Condition 2: cooling Ta 35°C - LWE 7°C (DT = 5°C); heating Ta DB/WB 7°C/6°C - LWC 45°C (DT = 5°C)

(3) According to EU n°811/2013 label lay-out 2019



# Options

|                | Type                              | Material name | Daikin Altherma 3<br>LT split Wall mounted | Daikin Altherma 3<br>LT split Floor standing |
|----------------|-----------------------------------|---------------|--|--|
| Controls       | Remote user interface             | EKRUDAS       | •  | •  |
|                | LAN Adapter + PV Solar connection | BRP069A61     | •  | •  |
|                | LAN only                          | BRP069A62     | •  | •  |
|                | Room thermostat (wired)           | EKRTHWA       | •  | •  |
|                | Room thermostat (wireless)        | EKRTR1        | •  | •  |
|                | External sensor                   | EKRTEFS       | •  | •  |
| Adapter        | Demand PCB                        | EKR1AHTA      | •  | •  |
|                | Digital I/O PCB                   | EKR1HBAA      | •  | •  |
| Back-up heater | Back-up heater kit                | EKLBUHCB6W1   |  | • only for EHVH-DV(G)                        |
| Installation   | Bi-zone kit (watts kit)           | BZKA7V3       | •  | • (excluding EHVZ)                           |
| Sensors        | Remote indoor sensor              | KRCS01-1      | •  | •  |
|                | Remote outdoor sensor             | EKRSCA-1      | •  | •  |
| Others         | PC USB Cable                      | EKPCCAB3      | •  | •  |
|                | Conversion kit                    | EKHBCONV      | •  |  |
|                |                                   | EKHVCONV      |  |  |



## Wall mounted unit

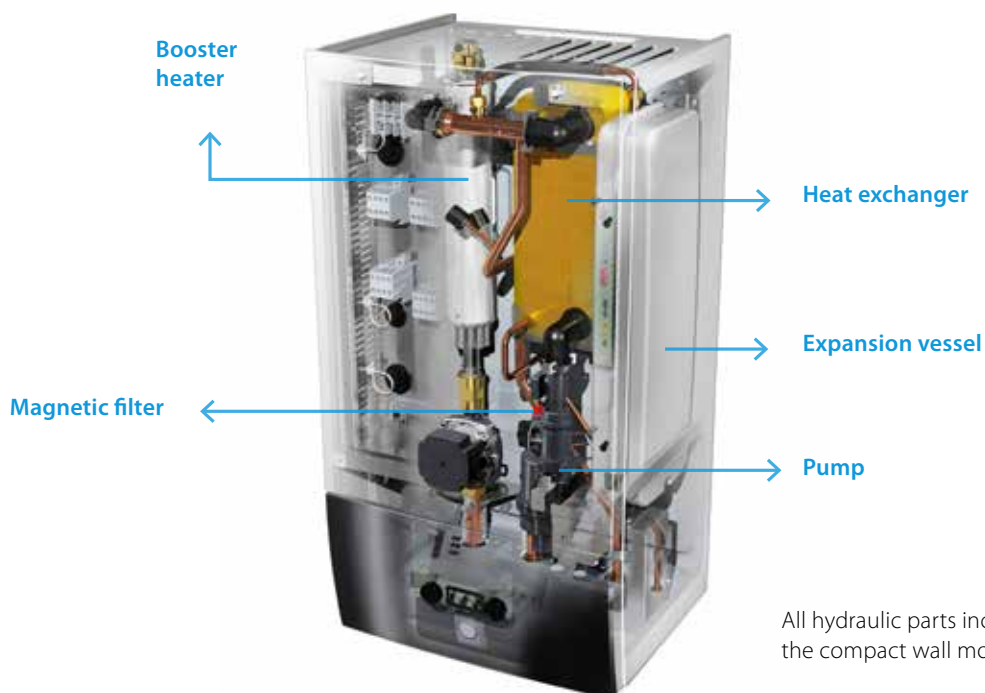


### Why choose Daikin wall mounted unit?

The Daikin Altherma 3 split wall mounted unit offers heating and cooling with high flexibility for a quick and easy installation, with an optional connection to deliver domestic hot water.

#### High flexibility for installation and domestic hot water connection

- › Inclusion of all hydraulic components means no third party components are required
- › PCB board and hydraulic components are located in the front for easy access
- › Compact dimensions allows for small installation space, as almost no side clearances are required.
- › The unit's sleek design blends in with other household appliances.
- › Combine with a stainless steel or ECH<sub>2</sub>O thermal store



## Flexibility in providing domestic hot water

If the end user only requires hot water and installation height is limited, a separate stainless steel tank provides the required installation flexibility.

ECH<sub>2</sub>O thermal store range: additional hot water comfort

Combine your wall mounted unit with a thermal store for additional hot water comfort.

- › Fresh water principle: receive domestic hot water on demand while eliminating the risk of contamination and sedimentation
- › Optimal domestic hot water performance: with high tapping performance
- › Fit for future possibility to integrate with renewable solar energy and other heat sources, e.g. fireplace
- › Lightweight and robust build on the unit combined with cascade principle offers flexible installation options



## How does it work?

Build for small and large homes, customers can choose between a pressureless and pressurised hot water system

Example of installation with a stainless steel domestic hot water tank.



# Daikin Altherma 3 low temperature split wall mounted unit

Wall mounted **heating only** air-to-water heat pump ideal for low energy houses

- > Inclusion of all hydraulic components means no third party components are required
- > PCB board and hydraulic components are located in the front for easy access
- > Compact dimensions allows for small installation space, as almost no side clearances are required.
- > The unit's sleek design blends in with other household appliances.
- > Combine with a stainless steel tank or ECH2O thermal store.
- > Outdoor unit extracts heat from the outdoor air, even at -25°C



**A+++** **65°C** **R-32**

| Efficiency data                   |                                   |                                      |  | EHBH + ERGA         | 04D6V + 04DV        | 08D6V + 06DV | 08D9W + 06DV        | 08D6V + 08DV | 08D9W + 08DV |
|-----------------------------------|-----------------------------------|--------------------------------------|--|---------------------|---------------------|--------------|---------------------|--------------|--------------|
| Heating capacity                  | Nom.                              |                                      | kW                                     | 4.30 (1) / 4.20 (2) | 6.00 (1) / 5.90 (2) |              | 7.50 (1) / 7.50 (2) |              |              |
| Power input                       | Heating                           | Nom.                                 | kW                                     | 0.85 (1) / 1.16 (2) | 1.24 (1) / 1.69 (2) |              | 1.63 (1) / 2.14 (2) |              |              |
| COP                               |                                   |                                      |  | 5.10 (1) / 3.62 (2) | 4.85 (1) / 3.50 (2) |              | 4.60 (1) / 3.50 (2) |              |              |
| Space heating                     | Average climate water outlet 55°C | General                              | SCOP                                   | 3.26                |                     | 3.32         |                     | 130          |              |
|                                   |                                   |                                      | ηs (Seasonal space heating efficiency) | 127                 |                     | 130          |                     |              |              |
|                                   | Average climate water outlet 35°C | General                              | SCOP                                   | 4.48                |                     | 4.47         |                     | 4.56         |              |
|                                   |                                   |                                      | ηs (Seasonal space heating efficiency) | 176                 |                     | 179          |                     |              |              |
| Seasonal space heating eff. class |                                   |                                      |  | A+++ (3)            |                     |              |                     |              |              |
| Indoor Unit                       |                                   |                                      |  | EHBH                | 04D6V               | 08D6V        | 08D9W               | 08D6V        | 08D9W        |
| Casing                            | Colour                            | White + Black                        |  |                     |                     |              |                     |              |              |
|                                   | Material                          | Resin, sheet metal                   |  |                     |                     |              |                     |              |              |
| Dimensions                        | Unit                              | HeightxWidthxDepth                   | mm                                     | 840x440x390         |                     |              |                     |              |              |
| Weight                            | Unit                              |                                      | kg                                     | 42.0                | 42.4                | 42.0         | 42.4                |              |              |
| Operation range                   | Heating                           | Water side                           | Min.~Max.                              | 15~65               |                     |              |                     |              |              |
|                                   | Domestic hot water                | Water side                           | Min.~Max.                              | 25~80               |                     |              |                     |              |              |
| Sound power level                 | Nom.                              |                                      | dBA                                    | 42                  |                     |              |                     |              |              |
| Sound pressure level              | Nom.                              |                                      | dBA                                    | 28                  |                     |              |                     |              |              |
| Outdoor Unit                      |                                   |                                      |  | ERGA                | 04DV                | 06DV         | 08DV                |              |              |
| Dimensions                        | Unit                              | HeightxWidthxDepth                   | mm                                     | 740x884x388         |                     |              |                     |              |              |
| Weight                            | Unit                              |                                      | kg                                     | 58.5                |                     |              |                     |              |              |
| Compressor                        | Quantity                          | 1                                    |  |                     |                     |              |                     |              |              |
|                                   | Type                              | Hermetically sealed swing compressor |  |                     |                     |              |                     |              |              |
| Operation range                   | Cooling                           | Min.~Max.                            | °CDB                                   | 10~43               |                     |              |                     |              |              |
|                                   | Domestic hot water                | Min.~Max.                            | °CDB                                   | -25~35              |                     |              |                     |              |              |
| Refrigerant                       | Type                              | R-32                                 |  |                     |                     |              |                     |              |              |
|                                   | GWP                               | 675.0                                |  |                     |                     |              |                     |              |              |
|                                   | Charge                            |                                      | kg                                     | 1.50                |                     |              |                     |              |              |
|                                   | Control                           | Expansion valve                      |  |                     |                     |              |                     |              |              |
| Sound power level                 | Heating                           | Nom.                                 | dBA                                    | 58                  | 60                  | 62           |                     | 62           |              |
|                                   | Cooling                           | Nom.                                 | dBA                                    | 61                  | 62                  |              |                     |              |              |
| Sound pressure level              | Heating                           | Nom.                                 | dBA                                    | 44                  | 47                  | 49           |                     |              |              |
|                                   | Cooling                           | Nom.                                 | dBA                                    | 48                  | 49                  | 50           |                     |              |              |
| Power supply                      | Name/Phase/Frequency/Voltage      |                                      | Hz/V                                   | V3/1N~/50/230       |                     |              |                     |              |              |
| Current                           | Recommended fuses                 |                                      | A                                      | 25                  |                     |              |                     |              |              |

(1) Cooling Ta 35°C - LWE 18°C (DT = 5°C); heating Ta DB/WB 7°C/6°C - LWC 35°C (DT = 5°C) (2) Cooling Ta 35°C - LWE 7°C (DT = 5°C); heating Ta DB/WB 7°C/6°C - LWC 45°C (DT = 5°C) (3) According to EU n°811/2013 - label lay-out 2019

# Daikin Altherma 3 low temperature split wall mounted unit

Wall mounted **reversible** air-to-water heat pump ideal for low energy houses

- > Inclusion of all hydraulic components means no third party components are required
- > PCB board and hydraulic components are located in the front for easy access
- > Compact dimensions allows for small installation space, as almost no side clearances are required.
- > The unit's sleek design blends in with other household appliances.
- > Combine with a stainless steel tank or ECH2O thermal store.
- > Outdoor unit extracts heat from the outdoor air, even at -25°C



A → 65°C R-32

| Efficiency data      |                                   |                    |  | EHBX + ERGA          | 04D6V + 04DV                         | 08D6V + 06DV        | 08D9W + 06DV | 08D6V + 08DV        | 08D9W + 08DV |
|----------------------|-----------------------------------|--------------------|--|----------------------|--------------------------------------|---------------------|--------------|---------------------|--------------|
| Heating capacity     | Nom.                              |                    | kW                                     | 4.30 (1) / 4.20 (2)  |                                      | 6.00 (1) / 5.90 (2) |              | 7.50 (1) / 7.50 (2) |              |
| Power input          | Heating                           | Nom.               | kW                                     | 0.850 (1) / 1.16 (2) |                                      | 1.24 (1) / 1.69 (2) |              | 1.63 (1) / 2.14 (2) |              |
| Cooling capacity     | Nom.                              |                    | kW                                     | 5.56 (1) / 4.37 (2)  |                                      | 5.96 (1) / 4.87 (2) |              | 6.25 (1) / 5.35 (2) |              |
| Power input          | Cooling                           | Nom.               | kW                                     | 0.940 (1) / 1.14 (2) |                                      | 1.06 (1) / 1.33 (2) |              | 1.16 (1) / 1.51 (2) |              |
| COP                  |                                   |                    |  | 5.10 (1) / 3.62 (2)  |                                      | 4.85 (1) / 3.50 (2) |              | 4.60 (1) / 3.50 (2) |              |
| EER                  |                                   |                    |  | 5.94 (1) / 3.84 (2)  |                                      | 5.61 (1) / 3.67 (2) |              | 5.40 (1) / 3.54 (2) |              |
| Space heating        | Average climate water outlet 55°C | General            | SCOP                                   | -                    |                                      | 3.26                |              | 3.32                |              |
|                      |                                   |                    | ηs (Seasonal space heating efficiency) |                      | 127                                  |                     | 130          |                     |              |
|                      | Average climate water outlet 35°C | General            | SCOP                                   | 4.48                 |                                      | 4.47                |              | 4.56                |              |
|                      |                                   |                    | ηs (Seasonal space heating efficiency) |                      | 176                                  |                     | 179          |                     |              |
|                      |                                   |                    | Seasonal space heating eff. class      | A++                  |                                      |                     | A+++ (3)     |                     |              |
| Indoor Unit          |                                   |                    |  | EHBX                 | 04D6V                                | 08D6V               | 08D9W        | 08D6V               | 08D9W        |
| Casing               | Colour                            |                    |  |                      | White + Black                        |                     |              |                     |              |
|                      | Material                          |                    |  |                      | Resin, sheet metal                   |                     |              |                     |              |
| Dimensions           | Unit                              | HeightxWidthxDepth | mm                                     |                      | 840x440x390                          |                     |              |                     |              |
| Weight               | Unit                              |                    |  | kg                   | 42.0                                 |                     | 42.4         | 42.0                | 42.4         |
| Operation range      | Heating                           | Water side         | Min.~Max.                              | °C                   | 15~65                                |                     |              |                     |              |
|                      | Domestic hot water                | Water side         | Min.~Max.                              | °C                   | 25~80                                |                     |              |                     |              |
| Sound power level    | Nom.                              |                    |  | dBA                  | 42                                   |                     |              |                     |              |
| Sound pressure level | Nom.                              |                    |  | dBA                  | 28                                   |                     |              |                     |              |
| Outdoor Unit         |                                   |                    |  | ERGA                 | 04DV                                 | 06DV                | 08DV         |                     |              |
| Dimensions           | Unit                              | HeightxWidthxDepth | mm                                     |                      | 740x884x388                          |                     |              |                     |              |
| Weight               | Unit                              |                    |  | kg                   | 58.5                                 |                     |              |                     |              |
| Compressor           | Quantity                          |                    |  |                      | 1                                    |                     |              |                     |              |
|                      | Type                              |                    |  |                      | Hermetically sealed swing compressor |                     |              |                     |              |
| Operation range      | Cooling                           | Min.~Max.          | °CDB                                   | 10~43                |                                      |                     |              |                     |              |
|                      | Domestic hot water                | Min.~Max.          | °CDB                                   | -25~35               |                                      |                     |              |                     |              |
| Refrigerant          | Type                              |                    |  |                      | R-32                                 |                     |              |                     |              |
|                      | GWP                               |                    |  |                      | 675.0                                |                     |              |                     |              |
|                      | Charge                            |                    |  | kg                   | 1.50                                 |                     |              |                     |              |
|                      | Control                           |                    |  |                      | Expansion valve                      |                     |              |                     |              |
| Sound power level    | Heating                           | Nom.               | dBA                                    | 58                   |                                      | 60                  |              | 62                  |              |
|                      | Cooling                           | Nom.               | dBA                                    | 61                   |                                      |                     | 62           |                     |              |
| Sound pressure level | Heating                           | Nom.               | dBA                                    | 44                   |                                      | 47                  |              | 49                  |              |
|                      | Cooling                           | Nom.               | dBA                                    | 48                   |                                      | 49                  |              | 50                  |              |
| Power supply         | Name/Phase/Frequency/Voltage      |                    | Hz/V                                   | V3/1N~/50/230        |                                      |                     |              |                     |              |
| Current              | Recommended fuses                 |                    | A                                      | 25                   |                                      |                     |              |                     |              |

(1) Cooling Ta 35°C - LWE 18°C (DT = 5°C); heating Ta DB/WB 7°C/6°C - LWC 35°C (DT = 5°C) (2) Cooling Ta 35°C - LWE 7°C (DT = 5°C); heating Ta DB/WB 7°C/6°C - LWC 45°C (DT = 5°C) (3) According to EU n°811/2013 - label lay-out 2019

# Options

|                | Type                              | Material name | Daikin Altherma 3<br>LT split Wall mounted | Daikin Altherma 3<br>LT split Floor standing |
|----------------|-----------------------------------|---------------|--|--|
| Controls       | Remote user interface             | EKRUDAS       | •  | •  |
|                | LAN Adapter + PV Solar connection | BRP069A61     | •  | •  |
|                | LAN only                          | BRP069A62     | •  | •  |
|                | Room thermostat (wired)           | EKRTRWA       | •  | •  |
|                | Room thermostat (wireless)        | EKRTR1        | •  | •  |
|                | External sensor                   | EKRTEETS      | •  | •  |
| Adapter        | Demand PCB                        | EKRP1AHTA     | •  | •  |
|                | Digital I/O PCB                   | EKRP1HBAA     | •  | •  |
| Back-up heater | Back-up heater kit                | EKLBUHCB6W1   |  | • only for EHVH-DV(G)                        |
| Installation   | Bi-zone kit (watts kit)           | BZKA7V3       | •  | • (excluding EHVZ)                           |
| Sensors        | Remote indoor sensor              | KRCS01-1      | •  | •  |
|                | Remote outdoor sensor             | EKRSCA-1      | •  | •  |
| Others         | PC USB Cable                      | EKPCCAB3      | •  | •  |
|                | Conversion kit                    | EKHBCONV      | •  |  |
|                |                                   | EKHVCONV      |  |  |